

# R915N01

## 1.Introduction

R915N01 is a high-performance UHF integrated passive reader independently developed by Enruipu Technology, with complete independent intellectual property rights. High-performance RF chip design supports electronic tags conforming to ISO-18000-6C (EPC G2) protocol. It has the characteristics of long reading distance, fast reading rate, waterproof and lightning protection, stable work and so on.

## 2.Shape & Size

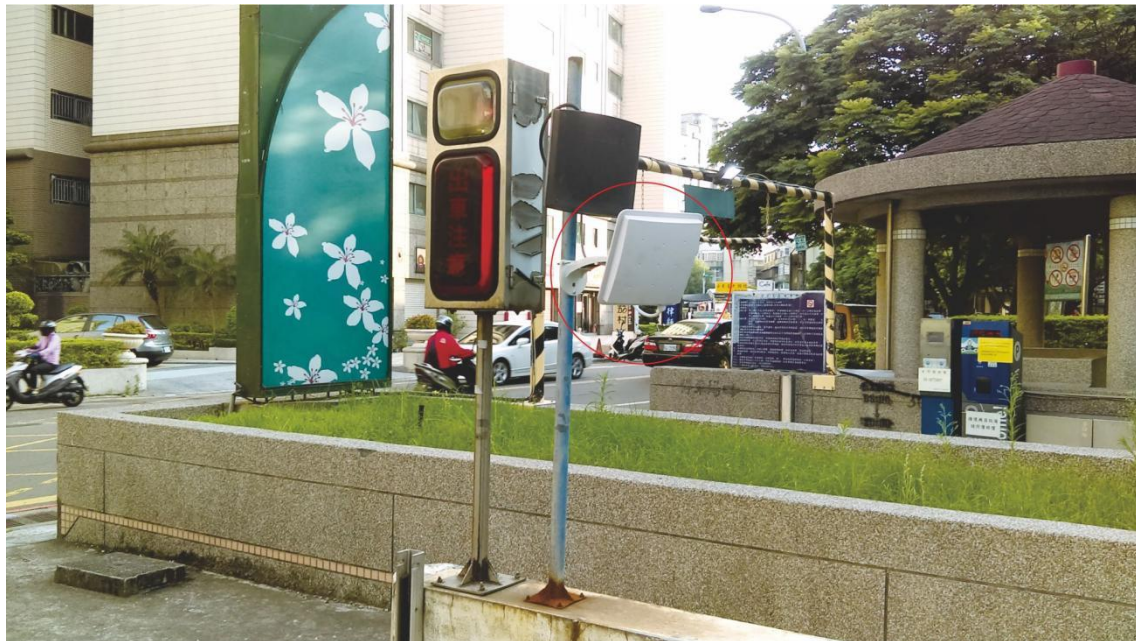


ABS and aluminium alloy shell, Dimensions: 258mm\*258mm\*40mm, Net weight: 1.75kg, Gross weight: 2.15kg.

## 3. Features

- a. Modular design, stable performance.
- b. Supports ISO 18000-6C/EPC Global Gen2.
- c. Card reading range is 0~8 meters.
- d. Support serial port and wiegand, can control the gate, ground sense, channel door.
- e. Used for personnel access control management, electric bicycle management, motorcycle management.
- f. Supports OEM and ODM services, and can customize the logo.

#### 4. The Case



**Residential area access control**



**Commercial area parking**



**Residential Parking**

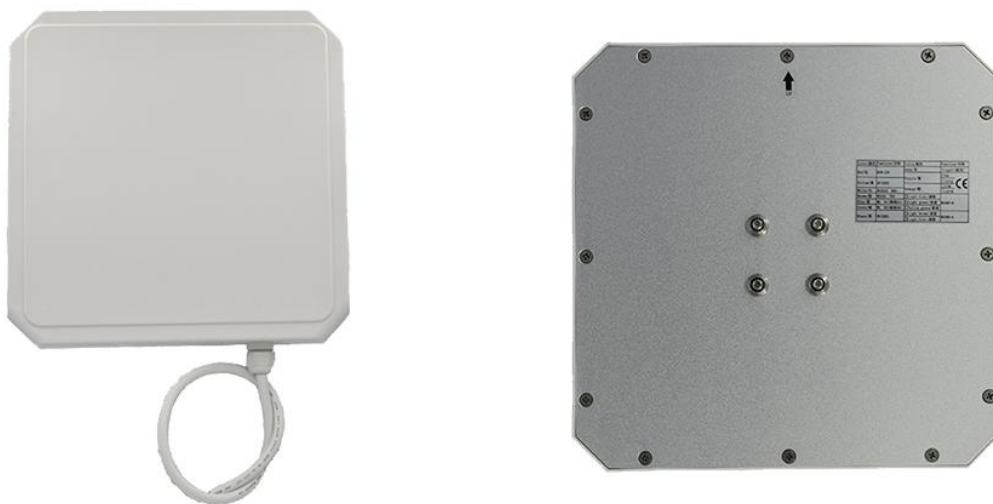


# R915N02

## 1. Instruction

R915N02 is a high performance UHF integrated passive reader independently developed by Enruipu Technology, which has completely independent intellectual property rights. It adopts high performance RF chip design and supports the electronic tag that conforms to ISO-18000-6C (EPC G2) protocol. It has the characteristics of long reading range, fast reading rate, waterproof and lightning-proof, stable working, etc.

## 2. Shape & Size



ABS and aluminum alloy shell, size: 260mm \* 260mm \* 40mm, net weight: 1.85kg, gross weight: 2.15kg.

## 3. Feature

- a. Modular design, stable performance.
- b. Support ISO 18000-6C/EPC Global Gen2 protocol.
- c. Read range is 0~12m.
- d. Support serial port and Wiegand, can control road gate, ground sensor, channel door.
- e. Support TCP/IP, RJ45 network port.
- f. Used for small vehicle management, parking lot vehicle access management.
- g. Support OEM and ODM service, can be customized logo.

4. The Case



**Underground Parking**

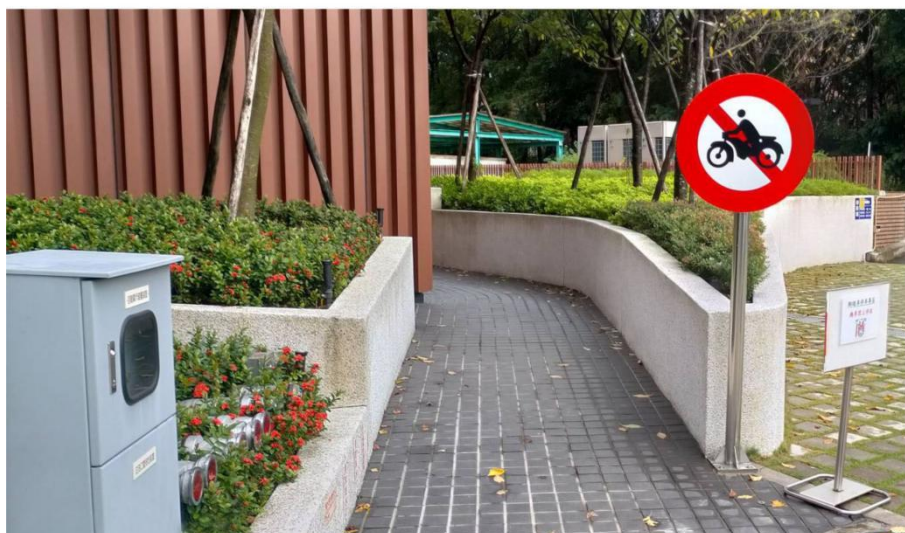
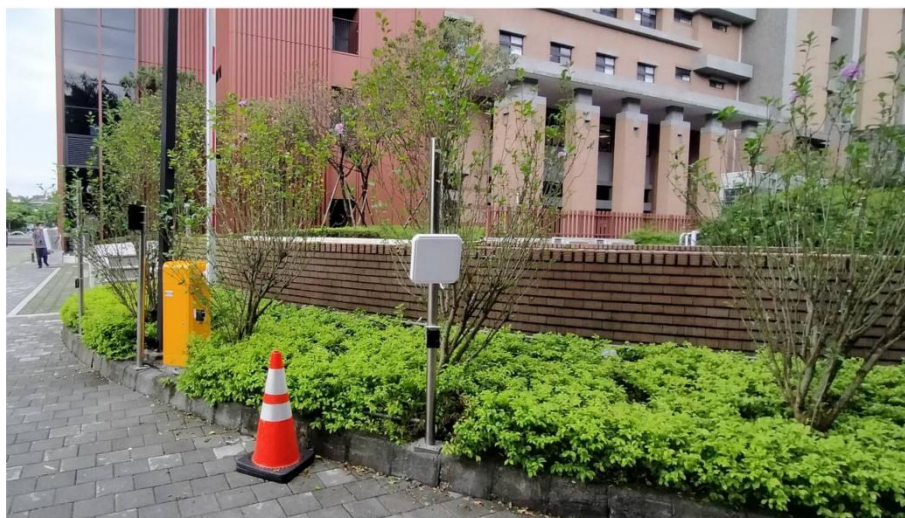


**Underground Parking**



**Residential access control**





**Public transportation management**

# R915N03

## 1. Instruction

R915N03 is a high performance UHF integrated passive reader independently developed by Enruipu Technology, with complete independent intellectual property rights. It adopts high performance RF chip design and supports the electronic tag that conforms to ISO-18000-6C (EPC G2) protocol. It has the characteristics of long reading distance, fast reading rate, waterproof and lightning-proof, stable working, etc.。

## 2. Shape & Size



ABS and aluminum alloy shell, size: 440mm\*440mm\*70mm, net weight: 2.25kg, gross weight: 2.85kg。

## 3. Feature

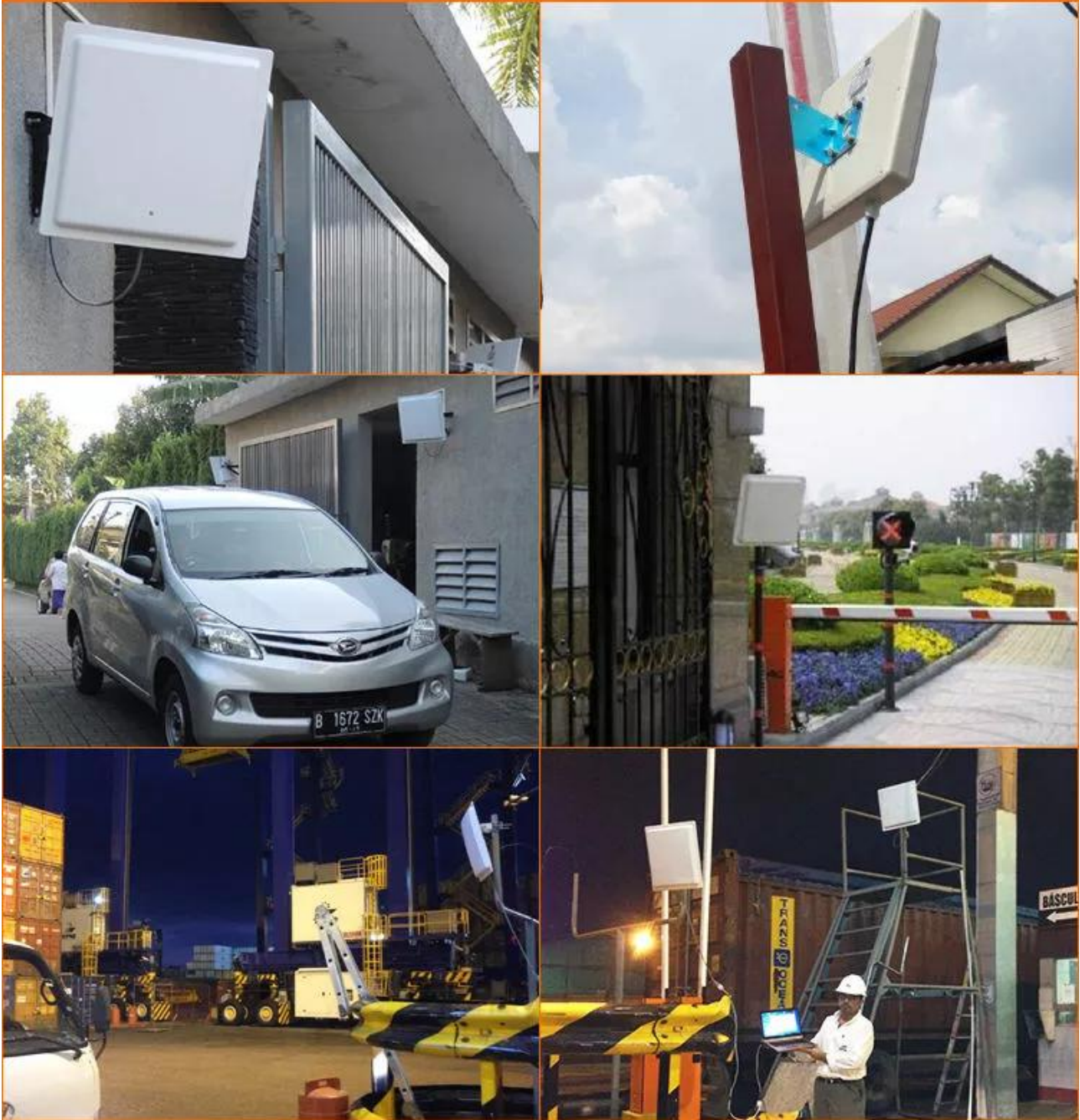
- a. Modular design, stable performance.
- b. Support ISO 18000-6C/EPC Global Gen2 protocol.
- c. Read distance 0~25m.
- d. Support serial port and Wiegand, can control road gates, ground sensors, channel doors.
- e. Support TCP/IP, RJ45 network port.
- f. Used for large vehicle management, customs, high-speed truck access control, toll management, etc.
- g. Support OEM and ODM service, can customize logo.



#### 4. The Case



**Truck access to the yard management**



**Plant vehicle/equipment management**



**Asset access management**



## About US

Shenzhen Enruipu Technology Co., Ltd, established in 2012, has been dedicated to the design, development, production and sales of RFID devices.

Our main products:

UHF Passive Readers, integrated reader, fixed reader, desktop reader.

UHF passive tags, PCB tags, ABS tags, Inlay tags, PVC cards, anti-metal tags

2.4GHz active reader

2.4GHz active card, Bluetooth card

13.56MHz IC card reader

NFC tags, IC cards, RFID business cards, membership cards

We not only provide our customers with high quality products and perfect after-sales service, but also provide OEM and ODM services to our customers. We help our customers to launch their products quickly and occupy the market rapidly.

Enruipu Technology, looking forward to cooperating with you!

For more information, please visit,

Official website 1: [www.enruipu.com](http://www.enruipu.com)

Official website 2: [www.sensitiot.com](http://www.sensitiot.com)

Alibaba website: [www.enruipu.en.alibaba.com/index.html?spm=a2700.shop\\_plgr.88.13](http://www.enruipu.en.alibaba.com/index.html?spm=a2700.shop_plgr.88.13)

E-mail: [1920549376@qq.com](mailto:1920549376@qq.com)

LinkedIn: [www.linkedin.com/in/Asa123/](http://www.linkedin.com/in/Asa123/)

Twitter: [www.twitter.com/Zhaowangji1](http://www.twitter.com/Zhaowangji1)

Phone/WeChat/WhatsApp: 15901322526